

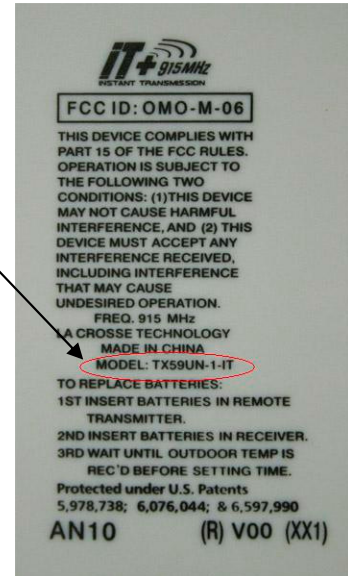
# Heavy Weather Pro WS2800 Series Software Release Notes

Version 1.54 and 1.54b

Release Date: April 26, 2011, Rev 2

To determine the correct version for your 2800 Series system:

- Version **1.54** is for all WS-2813-IT, WS-2812-IT and some recent models of WS-2811-IT or WS-2810-2-IT. The key identifier that you require this version is the Model # **TX59UN-1-IT** printed on your Thermo-Hygro sensor.
- Version **1.54b** is for all series WS-2810U-IT and some WS-2811-IT sets. The key identifier for this version is the Model # **TX59U-IT** on the Thermo-Hygro sensor.
- If you cannot access the Thermo-Hygro sensor, please see *Appendix A*.



Basically, there is a modest communication protocol difference in the two series. It is best to match your software version download to your Thermo-Hygro sensor's protocol. This version resolves a few known conflicts with specific anti-virus software products and an intermittent issue with some data downloads.

**Note:** If you have already installed the new release, click on the small ? menu and select **About HeavyWeather**. The appropriate **V1.5.4** or **V.1.5.4b** will display in the **About HeavyWeather** window. If you download in error, use the upgrade instructions (page 2) to replace your first effort with the correct version.



## System Requirements

- Windows 7/SP1 (32-bit or 64-bit)
- Vista/SP2 32-bit or greater
- Windows XP/SP3

- Administrative rights sufficient to install software; please consult your system administrator if you do not have the appropriate rights.

## First-Time Installation

If this is a first time installation, please download the correct software version and simply install it. All installation instructions are on the screen.

## Upgrade Installation

### Do This First:

- Close the existing application.
- Unplug the USB stick from the computer.

**Note:** If you changed Options settings (e.g. location of history.dat), review your current entries in the menu item **Extras|Options**. You may need to reset any selections you made after upgrade.

The screenshot shows the 'Options...' dialog box with the following sections and settings:

- General:** Language is set to 'English'. The 'Show Help as tooltips' checkbox is checked.
- Recording History File:** The file path is 'C:\Documents and Settings\user\My Documents\HeavyWeather\H...'. A 'New' button is present.
- Weather Station Settings:**
  - Time: 12 hour
  - Recording Interval: 10 Minutes
  - Wind Speed: mph
  - Temperature: °F
  - Air Pressure: inhg
  - Rain: inch
  - Keep weather station in hi-speed communication mode
- PC Software Units:**
  - Date: MM.DD.YYYY
  - Time: 12 hour
  - Wind Speed: mph
  - Temperature: °F
  - Air Pressure: inhg
  - Rain: inch
- Directories:**
  - History Files Directory: C:\Documents and Settings\user\My Documents\HeavyWeather\History
  - Template Files Directory: C:\Documents and Settings\user\My Documents\HeavyWeather\Templates
  - Graph Files Directory: C:\Documents and Settings\user\My Documents\HeavyWeather\Graphs

At the bottom, there are 'OK' and 'Cancel' buttons.

## Install the Upgrade:

- Go to this link for the new software:  
<http://www.lacrossetechnology.com/support/software.php>. The web site will offer the choice to **RUN** or **SAVE** the download.
  - If you choose the **RUN**, follow all directions on the screen.
  - Some users must choose **SAVE** (e.g. downloading from a different PC). Save it to your hard or flash drive in a location you will remember. If you download, then you must double click on the saved file to initiate installation.
- After installation, select the small **?** and **About HeavyWeather** to double-check the version installed is appropriate to your Thermo-Hygro sensor (see top of Page 1 for details).

**Note:** Replace any previous preferences in the **Extras/Options** menu as shown on page 2. **This is especially important if you used a different path or file name for the History File.**

- **Re-insert the USB Stick.** It will prompt you to re-synchronize with the 2800 Series display. What you may experience:
  - It may take several tries to resynchronize the USB stick. If you fail after about 6 tries, then go to Trouble-Shooting step 1 which recommends a reboot of the PC to clear the system file memories.
  - It may also be normal to have a one-time delay before the **Data** tab shows your latest downloads. In most cases, this may be a modest 15-30 minutes, but it could be up to 90 minutes depending on your PC. No data is lost – so please wait patiently.

## Trouble-Shooting

1. **If you have any difficulties, reboot your PC** and try the specific task again which caused difficulty the first time (e.g. re-synchronize the USB stick). **It is not uncommon to experience synchronization issues upon upgrade, especially with PCs you have owned awhile. The reboot resets the operating system so that fewer processing steps are needed for a smooth synchronization.**

2. If the reboot still fails to resolve your upgrade issues, proceed as follows:
  - Use the **Uninstall Instructions** (below)
  - Reboot your PC.
  - Perform the **Install the Upgrade** steps (above) again.
  - Reboot the PC again to synchronize the USB stick.

## Uninstall Instructions

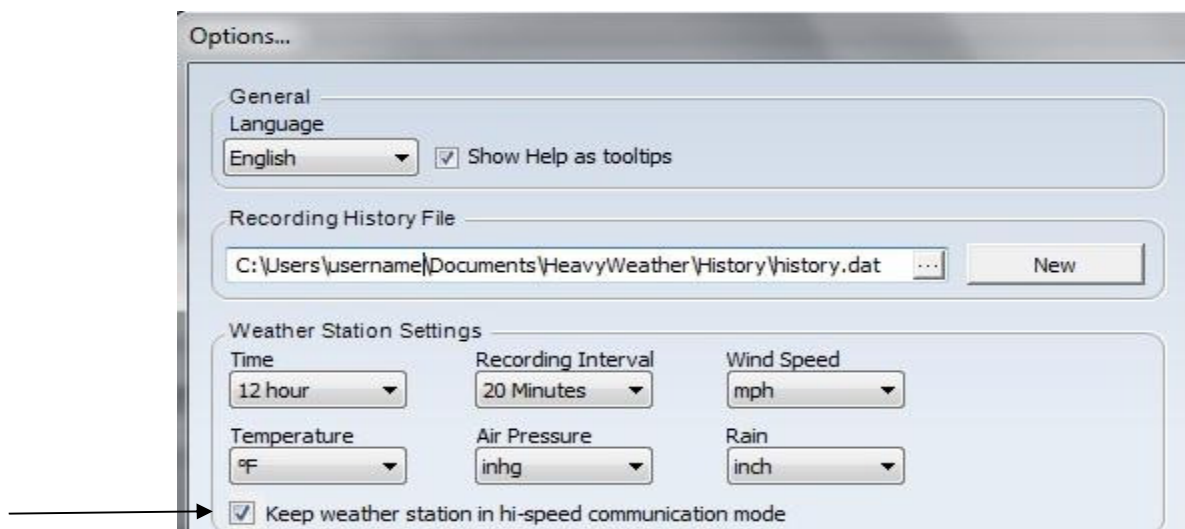
If for any reason, you no longer need a software version installed, using the menu item select **Start|Programs|HeavyWeather|Uninstall HeavyWeather Pro WS 2800** and remove the previous version.

---

## Previous Version 1.5 Features not in the Help Documentation

**Hi Speed Communication Mode** instructs the display to maintain high speed mode when Heavy Weather is open as the background application. This feature must be enabled in **Options** (see illustration below). **Please be aware that display battery life is consumed at a significantly faster rate when this option is enabled.**

**Note:** This option maintains data updates to the currdat.lst file for upload purposes when the HeavyWeather application is in background mode; it does not update the Current Weather Screen or the Data tab on screen until you resume foreground mode of Heavy Weather (select the HeavyWeather window to resume foreground).



## Appendix A: Verify your Display Firmware Version

**Warning:** If performed on a running system, the result will require re-synchronization with the outdoor sensors.

New users can easily verify the firmware version.

If batteries are inserted into the display (or pulled and re-inserted), the first digits that display in the lower left-hand corner are the firmware version. If the Thermo-Hygro is not available, then select your software version as follows:

Software Version	Firmware Versions
1.54	333 or 332
1.54b	288, 262, or 222

**Note:** To resynchronize the outdoor data, bring the display within 5 feet or so of the Thermo-Hygro sensor and press the up arrow key on the display. Wait for the outdoor data to fill on the display. If it does not fill after several tries, the **factory restart** information is contained in the documents referenced in **Appendix B**.

## Appendix B: Additional Product FAQ Resources

Select the appropriate FAQ document from the links below:

2813: <http://www.lacrossetechnology.com/2813/faq.pdf>

2812: <http://www.lacrossetechnology.com/2812/faq.pdf>

2811: <http://www.lacrossetechnology.com/2811/faq.pdf>

2810: <http://www.lacrossetechnology.com/2810/faq.pdf>