

# LA CROSSE CLOCK CO.

## 22" Indoor | Outdoor Wall Clock



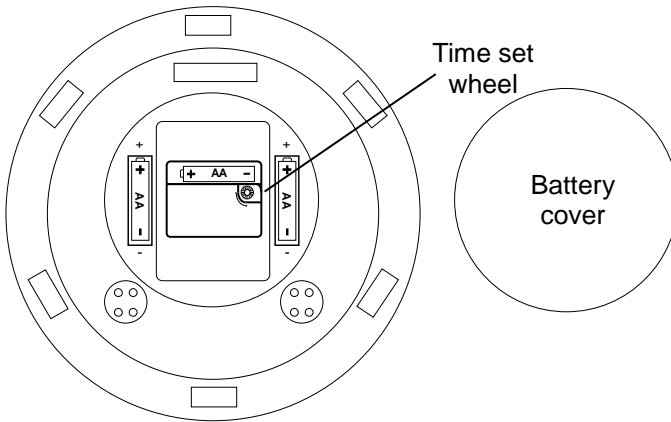
Model: 404-3556

DC: 122816

[www.lacrossetechnology.com/404-3556](http://www.lacrossetechnology.com/404-3556)

## Get Started

1. Remove round battery cover to access clock movement and battery compartment(s).
2. Insert 1 AA battery into the movement in the center of the clock.
3. OPTIONAL: For extended battery life, install two additional batteries, one on either side of the movement.
4. Spin the time set wheel to set the time.



## Position Clock

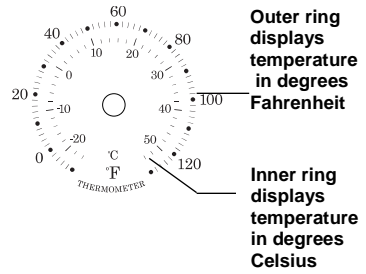
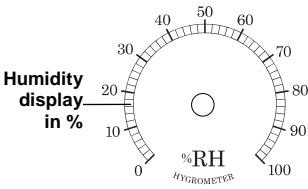
**Indoor:** Mount the clock on a wall with the hanging hole on the back of the clock.

**Outdoor:** Choose a location with an overhang to protect the clock from the overhead sun or standing snow or rain.

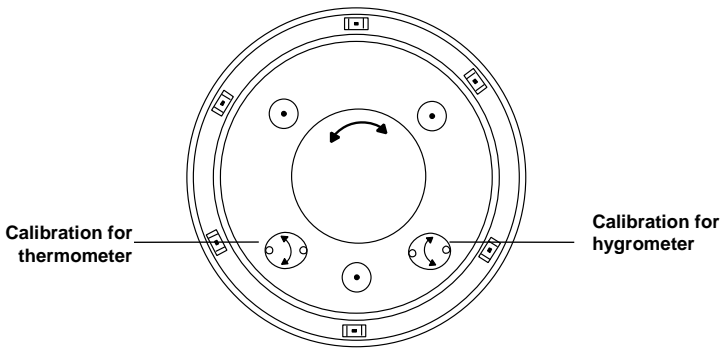
A shaded location will prevent inaccurate temperature readings. Mount the clock on a wall with the hanging hole on the back of the clock. Be sure the battery cover is on snug.

## Temperature and Humidity

The La Crosse Clock Co. wall clock has two analog sensors that measure surrounding temperature and humidity. The temperature information is displayed in degrees Fahrenheit and Celsius, and humidity data is displayed in percentage.



The thermometer and hygrometer have been calibrated at the factory. To check the sensors accuracy, tune to your local weather forecast information broadcast for the latest weather information. The sensors may be adjusted.



To manually adjust the sensors, gently turn the temperature or humidity sensor adjustment on the back of the clock until desired setting has been reached.

## Specifications

**Battery Requirements:** 1 AA (IEC LR6) required in movement  
(Alkaline recommended)

Optional: 2 additional AA (IEC LR6) batteries for extended battery life.

**Battery life:** 1 battery; over 12 months  
3 batteries; over 36 months

## Visit Us on Social Media



[http://bit.ly/LaxTech\\_YouTube](http://bit.ly/LaxTech_YouTube)



[http://bit.ly/LaxTech\\_Facebook](http://bit.ly/LaxTech_Facebook)



[http://bit.ly/LaxTech\\_Twitter](http://bit.ly/LaxTech_Twitter)



[http://bit.ly/LaxTech\\_Pinterest](http://bit.ly/LaxTech_Pinterest)

## Care and Maintenance

- Do not mix old and new batteries
- Do not mix Alkaline, Standard, Lithium or Rechargeable Batteries
- Always purchase the correct size and grade of battery most suitable for intended use.
- Replace all batteries of a set at the same time.
- Clean the battery contacts and also those of the device prior to battery installation.
- Ensure the batteries are installed with correct polarity (+and -).
- Remove batteries from equipment that is not to be used for an extended period of time.
- Promptly remove expired batteries.

## Warranty and Support Information

La Crosse McCormick, LLC. provides a 2-year limited warranty (from the date of the original consumer purchase), on this product against manufacturing defects in materials and workmanship. Send \$5.00 with date and proof of purchase to the following address. Please include the model number of your product and your complete address and phone number.

La Crosse McCormick, Warranty Department, 2830 26th St. St., La Crosse, WI 54601

[www.lacrossetechnology.com/support](http://www.lacrossetechnology.com/support)