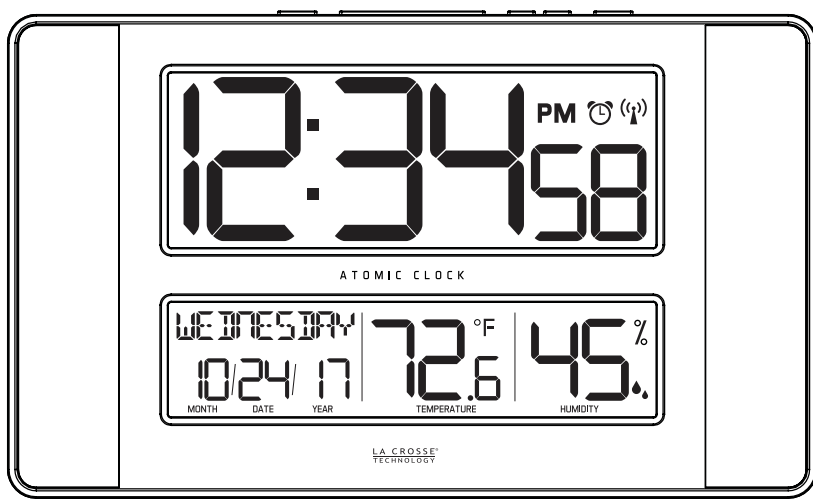


LA CROSSE®
TECHNOLOGY

Atomic Digital Clock

with Indoor Temp/Humidity



For online video support:
<http://bit.ly/LaxTechTalk>

Model: 513-1417H-AL D.C. 120716

Protected under U.S. Patents:
5,978,738 | 6,076,044 | RE43903

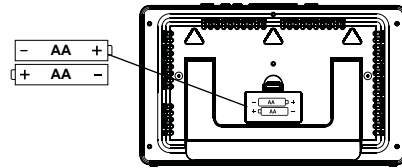
Atomic Time

- The clock automatically searches for the atomic time UTC 7:00, 8:00, 9:00, 10:00, and 11:00.
- Press and release the SET button to search manually.
- For information visit: www.nist.gov/pml/div688/grp40/wwwb.cfm

Setup

① Power up.

Insert 2-AA batteries into the clock.



- ### ② Configure basic settings.
- Hold the SET button for 3 seconds to enter settings menu. Use the +/- buttons to adjust and SET to confirm.

Setting order:

- Language: English | Español
- Beep ON | OFF
- Atomic ON | OFF
- Time Zone
- DST ON | OFF (Daylight Saving Time)
- Hour
- Minutes
- Year
- Month
- Date
- Fahrenheit | Celsius

Note: When the Atomic setting is set to OFF, the menu will skip to item 6, your Hour setting

Time Zone	
AST	Atlantic
EST	Eastern
CST	Central
MST	Mountain
PST	Pacific
AKT	Alaskan
HAT	Hawaiian

Note: When Español is selected, weekday and sub menu instructions will be in Spanish. Calendar change: Day, Month, Year.

<p>Language</p> <p>English</p>	<p>Beep ON OFF</p> <p>ON</p>	<p>Atomic ON OFF</p> <p>ON</p>
<p>Time Zone</p> <p>12:00 AM</p> <p>ZONE-EST</p>	<p>DST ON OFF</p> <p>ON</p> <p>DST</p>	<p>All States except Arizona must set the DST mode to OFF.</p>

<p>Hour</p> <p>12: AM</p> <p>Hour</p>	<p>Minutes</p> <p>:34</p> <p>MINUTES</p>	<p>Year</p> <p>16</p> <p>YEAR</p>
<p>Month</p> <p>10</p> <p>MONTH</p>	<p>Date</p> <p>26</p> <p>DATE</p>	<p>Temp</p> <p>OF</p> <p>TEMP</p>

Time Alarm

Set: Hold the ALARM button for 3 seconds to enter alarm settings. Use the +/- buttons to adjust and SET to confirm.

<p>Hour</p> <p>6:00 AM</p> <p>ALARM</p>	<p>Minutes</p> <p>6:30 AM</p> <p>ALARM</p>
---	--

Deactivate | Activate: The alarm is active when set. Press and release the ALARM button to deactivate or activate the alarm.

Snooze: Press and release the SNOOZE button to silence the alarm for 10 minutes. Snooze can be repeated.

HIGH | LOW Temperature | Humidity Records

Press PLUS button:

- High Temperature
- High Humidity

HIGH	86.8°F
HIGH	79%

Press MINUS button:

- Low Temperature
- Low Humidity

LOW	56.4°F
LOW	23%

Follow Us on Social Media



Latest video content

http://bit.ly/LaxTech_YouTube



Join the conversation

http://bit.ly/LaxTech_Twitter



For personalized interaction

http://bit.ly/LaxTech_Facebook



Pin and share

http://bit.ly/LaxTech_Pinterest

Specifications

Indoor	32 °F to 122 °F 0 °C to 50 °C 10% RH to 99% RH
Power	2 AA (LR6, IEC) batteries not included
Battery Life	12 months with reputable batteries
Dimensions	11.10" W x 1.14" D x 6.75" H (28.19 W x 2.89 D x 17.15 H cm)

Warranty and Support

La Crosse Technology, Ltd. provides a 1-year limited time warranty (from date of purchase) on this product relating to manufacturing defects in materials & workmanship.

Before returning a product, please contact our friendly customer support or visit our online help:


Phone: 1-608-782-1610

Online: www.lacrossetechnology.com/support

View full warranty details online at:

www.lacrossetechnology.com/warranty_info.pdf

Care and Maintenance

- Do not mix old and new batteries
- Do not mix Alkaline, Standard, Lithium or Rechargeable Batteries
- Always purchase the correct size and grade of battery most suitable for intended use.
- Replace all batteries of a set at the same time.
- Clean the battery contacts and also those of the device prior to battery installation.
- Ensure the batteries are installed with correct polarity (+ and -).
- Remove batteries from equipment which is not to be used for an extended period of time.
- Promptly remove expired batteries.
- When a battery symbol appears, replace batteries in the clock. 

FCC Statement

This equipment has been tested and found to comply with the limits for a Class B digital device, pursuant to part 15 of the FCC Rules. These limits are designed to provide reasonable protection against harmful interference in a residential installation. This equipment generates, uses and can radiate radio frequency energy, and if not installed and used in accordance with the instructions, may cause harmful interference to radio communications.

However, there is no guarantee that interference will not occur in a particular installation. If this equipment does cause harmful interference to radio or television reception, which can be determined by turning the equipment off and on, the user is encouraged to try to correct the interference by one or more of the following measures:

- Reorient or relocate the receiving antenna.
- Increase the separation between the equipment and receiver.
- Connect the equipment into an outlet on a circuit different from that to which the receiver is connected.
- Consult the dealer or an experienced radio/TV technician for help.

This device must not be co-located or operating in conjunction with any other antenna or transmitter.

Operation is subject to the following two conditions:

- (1) This device may not cause harmful interference, and
- (2) This device must accept any interference received, including interference that may cause undesired operation.

Caution!

The manufacturer is not responsible for any radio or TV interference caused by unauthorized changes or modifications to this equipment. Such changes or modifications could void the user authority to operate the equipment.

All rights reserved. This manual may not be reproduced in any form, even in part, or duplicated or processed using electronic, mechanical or chemical process without the written permission of the publisher. This booklet may contain errors or misprints. The information it contains is regularly checked and corrections are included in subsequent editions. We disclaim any responsibility for any technical error or printing error, or their consequences.

All trademarks and patents are recognized.

Canada Statement

This device complies with CNR Industry Canada license -exempt devices.

Operation is subject to the following two conditions:

- (1) This device may not cause interference; and
- (2) This device must accept any interference, including interference that may cause undesired operation of the device.