

WARRANTY INFO

La Crosse Technology, Ltd. provides a 1-year limited time warranty (from date of purchase) on this product relating to manufacturing defects in materials & workmanship.

For Full Warranty Details, Visit: www.lacrossetechnology.com/support

CARE + MAINTENANCE

- Do not mix old and new batteries.
- Do not mix Alkaline, Lithium, standard, or rechargeable batteries.
- Always purchase the correct size and grade of battery most suitable for intended use.
- Clean the battery contacts and also those of the device prior to battery installation.
- Ensure the batteries have with correct polarity (+ / -).
- Remove batteries from equipment that will not to be used for an extended period.
- Promptly remove expired batteries.

FCC STATEMENT

This equipment has been tested and found to comply with the limits for a Class B digital device, pursuant to part 15 of the FCC Rules. These limits are designed to provide reasonable protection against harmful interference in a residential installation. This equipment generates, uses and can radiate radio frequency energy and, if not installed and used in accordance with the instructions, may cause harmful interference to radio communications. However, there is no guarantee that interference will not occur in a particular installation. If this equipment does cause harmful interference to radio or television reception, which can be determined by turning the equipment off and on, the user is encouraged to try to correct the interference by one or more of the following measures:

- Reorient or relocate the receiving antenna.
- Connect the equipment into an outlet on a circuit different from that to which the receiver is connected.
- Increase separation between equipment & receiver.
- Consult the dealer or an experienced radio/TV technician for help.

This device must not be co-located or operating in conjunction with any other antenna or transmitter. Operation is subject to the following two conditions:

- (1) This device may not cause harmful interference, and (2) This device must accept any interference received, including interference that may cause undesired operation.

CAUTION!

The manufacturer is not responsible for any radio or TV interference caused by unauthorized changes or modifications to this equipment. Such changes or modifications could void the user authority to operate the equipment.

All rights reserved. This manual may not be reproduced in any form, even in part, or duplicated or processed using electronic, mechanical or chemical process without the written permission of the publisher.

This booklet may contain errors or misprints. The information it contains is regularly checked and corrections are included in subsequent editions. We disclaim any responsibility for any technical error or printing error, or their consequences. All trademarks and patents are recognized.



WARNING: This product can expose you to chemicals including styrene, which is known to the State of California to cause cancer. For more information go to: www.P65Warnings.ca.gov

LA CROSSE®
TECHNOLOGY

WIRELESS TEMPERATURE / HUMIDITY SENSOR



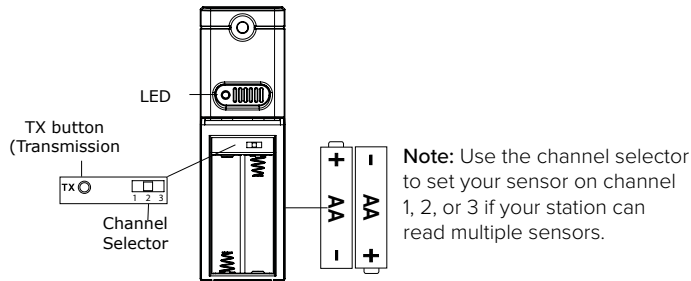
Model: TX141TH-BCHv3

DC: 112618

View online at: bit.ly/tx141th-bchv3

Power up

Insert 2-AA batteries into your Outdoor Sensor.



Power up as a Replacement Sensor

Refer to the owner's manual for your clock or weather station to see if you can Search for Sensor. If so, enable a search and press the TX button (transmission) on your sensor.

If there is no Search option, try this:

1. Bring your sensor inside next to the station and remove batteries from both devices.
2. Press any button at least 20 times, and then wait 15 minutes.
3. After the wait, install fresh batteries into both your sensor and station. Your outdoor temperature should return within the next few minutes.
4. Keep your sensor next to the station for another 15 minutes to establish a strong connection.
5. Once connection is reestablished, place sensor outside in a shaded location.

Position Sensor

Option 1:

- Install one mounting screw into a wall.
- Place the transmitter onto the screw.

Option 2:

- Insert the mounting screw through the front of the sensor and into the wall.
- Tighten the screw to snug (do not over tighten).
- Mount the temperature sensor on a north-facing wall or in any well shaded location. Sun will make it read high.
- Under an eave or deck rail is preferred.
- Be sure the outdoor sensor is mounted vertically to drain moisture.
- The maximum wireless transmission range to the weather station is over 330 feet (100 meters) in open air, not including walls or floors.

Watch sensor mounting video: bit.ly/TH_SensorMounting

Specifications

Temperature range: -40°F to 140°F (-40 °C to 60 °C)

Humidity range: 10%-99% RH

Transmission range: Up to 330 feet

Transmission frequency: 433 MHz

Power requirements: 2 "AA" Alkaline batteries (not included)

Dimensions: 1.58" L x 0.83" W x 5.08" H